

Operating Theatre Accessories



Innovative solutions for **you and your patients**

AneticAid® 

OPERATING THEATRE ACCESSORIES

PATIENT POSITIONING

| | |
|-------------------------|-------|
| Head & Neck | 3 |
| Arm & Hand | 4-8 |
| Shoulder, Spine & Torso | 9-12 |
| Gynae & Urology | 13-15 |
| Leg, Knee & Foot | 16 |
| General | 17-22 |

PRESSURE RELIEVING GEL SUPPORTS

| | |
|----------------------------|-------|
| Introduction | 23 |
| Head & Neck | 24-27 |
| Arm & Hand | 28-29 |
| Shoulder, Spine & Torso | 30-32 |
| Gynae & Urology | 33 |
| Leg, Knee & Foot | 34-35 |
| General | 36-41 |
| Patient Positions | 42 |
| Pressure Injury Prevention | 43 |

STAINLESS STEEL THEATRE FURNITURE

| | |
|--------------------------------|-------|
| Instrument & Dressing Trolleys | 44 |
| Mayo Tables | 45 |
| Stools | 46 |
| Bowl Stands | 47 |
| IV Poles & General Furniture | 48 |
| Factory Fitted Build Options | 49 |
| General Accessories | 50-51 |

At Anetic Aid, our mission is to deliver the best outcomes for patients and best experiences for clinical teams. We listen carefully and understand needs.

This allows us to design, develop and manufacture, as well as establish partnerships, that lead to the supply of innovative, intuitive, high-quality medical devices for patient transport, treatment and recovery.

Our Operating Theatre Accessories range has been built around the realities of modern surgery: patient safety, reliable positioning, pressure injury prevention, surgical access and efficient theatre workflow. Bringing together patient positioning accessories, pressure relieving gel supports and stainless steel theatre furniture, this brochure offers a comprehensive portfolio of products for a wide range of procedures - across public and private healthcare.

Designed, manufactured and sourced with clinical practicality at the forefront, the OTA range combines Anetic Aid's UK manufacturing expertise with trusted specialist partnerships. Products can be used with operating tables and surgical stretchers, like our own QA4™ Mobile Surgery System.

Our focus is simple: **dependable products, clear product choice and responsive support.** With many items held in stock for rapid delivery, and specialist products made to order, Anetic Aid gives clinical teams and procurement departments confidence from selection through to use.

 **Made to order**

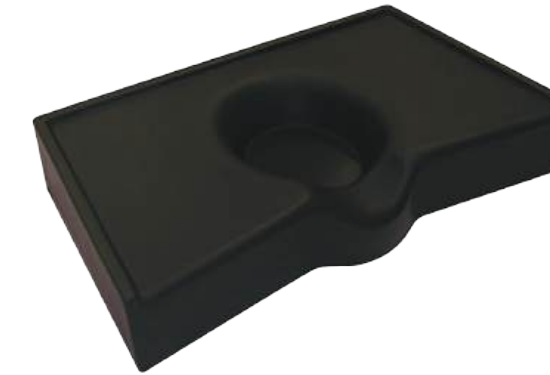
 **Factory fit – please specify at time of ordering**



HEAD & NECK

Head and Neck

Our range of head and neck products allows for secure patient positioning and maximum patient comfort - all to suit a range of procedures and medical needs.



Rubens Pillow

Ideal for ophthalmics, providing secure positioning of the head while allowing the surgeon to rest their elbows on the pillow's 'wings'.

Description

Rubens Pillow Adult

Code

10180



Doughnut Heading

This integral skin, polyurethane, foam moulded, closed heading is suited to short time-period supine procedures.

Description

Doughnut Heading Adult

Code

10170



Whitlock Horseshoe Headrest

Our popular malleable open headrest, which includes a sculpted recess to alleviate pressure on the neck during head & neck procedures.

Description

Whitlock Horseshoe Headrest

Code

10185



ARM & HAND

Introducing the...

Arm and Hand Surgery Tables

NEW

The Gardiner Hand Surgery System™

The perfect solution for high volume, low complexity hand surgery.

Developed in conjunction with consultant plastic & hand surgeon Matthew Gardiner and Frimley Health NHS Foundation Trust, this hand table is perfect for supporting hand surgery using the WALANT approach - with the patient in a comfortable seated position.

| Description | Code |
|------------------------------------|-------|
| The Gardiner Hand Surgery System™* | 21380 |

*Requires 2 x Clamps (Code: 10248-B1 / 10248-B2)



NEW

The Magna Hand Surgery Table

Supine, seated or partially elevated? The Magna Hand Surgery Table covers it all.

Developed in conjunction with a consultant hand surgeon, this hand table is perfect for all types of hand surgery when the patient is in supine, seated or partially elevated positions.

| Description | Code |
|-------------------------------|-------|
| The Magna Hand Surgery Table* | 21384 |

*Requires 1 x Clamp (Code: 10248)



ARM & HAND

The Woodlands Arm & Hand Surgery Table

NEW

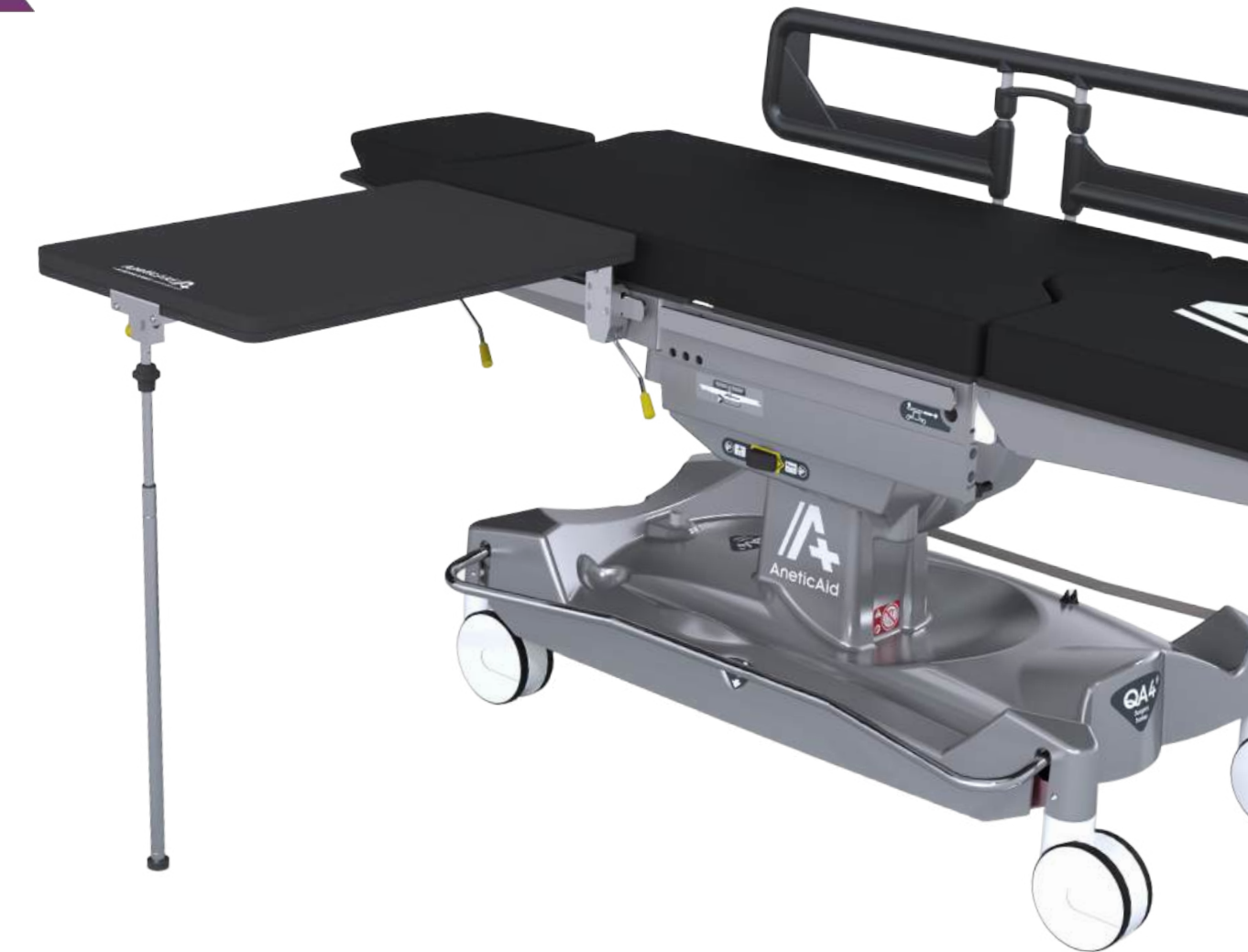
Developed in conjunction with a consultant hand surgeon, The Woodlands Arm & Hand Surgery Table is ideal for operating theatre or day surgery departments where arm and hand surgery requires true rigidity for complex procedures - with the patient supine.

The hand table is radiolucent and is supplied with a firm surface pad. It includes a laterally-sliding, fixed, fold-away telescopic support leg - which is mounted to a slide bracket, allowing the leg to be positioned offset for easier C-arm access. It also includes twin integrated direct-on lever lock clamps.

Features:

- **Dimensions:** L690mm x W450mm
- **Weight:** 7.6kg
- **Perfect for surgeries requiring true rigidity**
- **Compatible with QA4 Mobile Surgery System and QA3 Stretchers via an accessory bracket.**

| Description | Code |
|--|-------|
| The Woodlands Arm & Hand Surgery Table | 21385 |



ARM & HAND



Reison Arm and Hand Surgery Table

Light weight arm and hand surgery table made from **carbon fibre** by Reison Medical AB.

| Description | Code |
|--|----------|
| Arm & Hand Surgery Table - Carbon Fibre (10-396) - Hourglass - with Pad - for EU Side Bar | 10425-EU |
| Arm & Hand Surgery Table - Carbon Fibre (10-396-UK) - Hourglass - with Pad - for UK Side Bar | 10425-UK |



Carter Braine Arm Support

This Carter Braine Arm Support is a useful and effective accessory, providing comfortable and convenient placement for the operative or non-operative arm.

| Description | Code |
|---|-------|
| Carter Braine Arm Support - with 235mm Pad* | 10195 |
| Carter Braine Arm Support - Pad ONLY | 10196 |

*Requires 1 x Clamp (Code: 10250)



Lateral / Prone Arm Support

A product by Baxter®, this Lateral / Prone Arm Support safely and easily positions patients in lateral, prone and seated orientations. It allows for effective positioning of the arms to prevent potential patient injury, and the malleable hand rest enables the surgeon to place the patient's hand in any desired orientation.

| Description | Code |
|---|-------|
| Lateral / Prone Arm Support - includes Pad* | 10773 |
| Lateral / Prone Arm Support - Replacement Pad | 10707 |

*Requires 1 x Clamp (Code: 10248)

Reison Flexible Positioning Armboard

NEW

The Flexible Positioning Armboard, by Reison Medical AB, is designed to provide stable support in a wide range of positions — including supine, prone, lateral, fowler and beach chair. The flexibility is provided via the intuitive and easy-to-use double link, operating via a comfortable hand-wheel.

It also features a lever-lock adjustable plate that allows you to slide the arm plate horizontally, which allows for more precise positioning.

Supplied as standard with an integrated universal clamp - suitable for use with UK, EU and US accessory side bar - and a standard pad.

Dimensions:

- **Length: 400mm**
- **Width: 160mm**
- **Height: 130mm to 470mm**
- **Weight: 4.1kg**

| Description | Code |
|--|-------|
| Flexible Rotating Armboard - with Adjustable Plate (20-300-10) - integrated Clamp for UK, EU & US Side Bar - includes Standard Pad | 10400 |



REISON
MEDICAL

ARM & HAND



ARM & HAND



Reison Rotating Armboard

Operated via a highly secure one-handed ball joint release mechanism, this armboard offers accurate positioning, patient comfort and excellent surgical access.

| Description | Code |
|--|----------|
| Armboard - Rotatable (10-387) - with Rotating Clamp - For EU Side Bar | 10400-EU |
| Armboard - Rotatable (10-387) - with Rotating Clamp - For UK Side Bar | 10400-UK |
| Armboard Cushion / Pad (10-382-H) - Tapered Bottom with Guttered Top Surface | 10415-B1 |



Easy Armboard

Attaches via **direct-on mechanism** and easy to operate armboard.

| Description | Code |
|---|-------|
| Easy Armboard - Lift-to-Position - for EU Side Bar - includes Pad | 10774 |
| Easy Armboard - Lift-to-Position - for UK Side Bar - includes Pad | 10775 |
| Easy Armboard - Replacement Pad - 75mm | 10705 |



Narrow Armboard

Our popular, quick, simple and easy to use lightweight arm table. Perfect for supine, lateral or prone positioning requirements.

| Description | Code |
|---|-------|
| Narrow Armboard - 580mm x 210mm - with Pad* | 10220 |
| Narrow Armboard - Pad ONLY | 10221 |

*Requires 1 x Clamp (Code: 10250)

SHOULDER, SPINE & TORSO

Lateral Brace 3-Piece

A product by Baxter®, this Lateral Brace comes with extended posts that adjust for use on a variety of patients. It stabilises patients on OR tables, especially for total hip and other procedures requiring optimum lateral stability.

As well as being appropriate for most makes of operating table, these accessories can be used with Anetic Aid's QA4™ Mobile Surgery System - the complete multi-purpose solution for patient transport, treatment and recovery.

Features:

- **Patient weight capacity: 181kg**
- **Braces are fully adjustable**
- **Soft pads provide cushioning of bony prominences**
- **Swivel heads conform to anatomical contours of patient and can be securely locked for precise positioning**

| Description | Code |
|--|---------|
| Lateral Brace - 3-piece Set - includes two rectangular supports & one circular support | **10770 |
| Lateral Brace - Circular Support Only | *10771 |
| Lateral Brace - Rectangular Support Only | *10772 |
| Lateral Brace - Replacement Pad - Circular Support | 691120 |
| Lateral Brace - Pad - Rectangular Support - Centred | 691125 |
| Lateral Brace / Arthroscopic Stress Post - Pad - Off-set | 691130 |

**Requires 3 x Clamps (Code: 10761)

*Requires 1 x Clamp (Code: 10761)



Stable positioning solutions for shoulder, spine and torso procedures



SHOULDER, SPINE & TORSO

Reison Lateral Supports

This type of support includes two pads, one flat and one curved, to accommodate different patient physiques. It can also be fixed in a number of positions.

| Description | Code |
|---|-----------|
| Lateral Support - Narrow (10-560) - Rotatable - includes Pads | *10430-L1 |
| Lateral Support - Wide (10-561) - Rotatable - includes Pads | *10430-L2 |
| Circular Pubic Support (10-567) | *10430-P1 |

*Requires 1 x Clamp (Code: 10250-EU / 10250-UK)



Lateral / Pelvic Supports

Our popular, quick, simple and easy to use lightweight lateral and pelvic supports. Both supports are adjustable in height to allow for optimal and comfortable positioning.

| Description | Code |
|----------------------------|--------|
| Lateral Support - with Pad | *10200 |
| Lateral Support - Pad ONLY | 10201 |
| Pelvic Support - with Pad | *10205 |
| Pelvic Support - Pad ONLY | 10206 |

*Requires 1 x Clamp (Code: 10250)



Montreal Laminectomy Support

The Montreal Laminectomy Support is a positioning device used in spinal procedures - and any other surgeries requiring the prone position. It's ergonomically designed to ensure maximum patient comfort.

| Description | Code |
|---|-------|
| Montreal Laminectomy Prone Positioner - LARGE | 10160 |
| Montreal Laminectomy Prone Positioner - MEDIUM | 10161 |
| Montreal Laminectomy Prone Positioner - EXTRA LARGE | 10162 |

SHOULDER, SPINE & TORSO



Lift-Assist™ Beach Chair

A product by Baxter®, the Lift-Assist™ Beach Chair is designed for use with orthopaedic procedures using the Fowler's or beach chair position.

| Description | Code |
|---|----------|
| Lift-Assist™ Beach Chair - includes reusable pad set and intubation plate & pad | 10786 |
| Lift-Assist™ Beach Chair - Standard Head Positioner - includes pad set | 10786-H0 |
| Counter Traction Strap | 10786-R1 |
| Storage Cart - for Lift-Assist™ Beach Chair | 10786-S1 |
| Clamp - for Lift-Assist™ Beach Chair - for EU Side Bar | 10786-K2 |



Shoulder Supports

Specially designed to secure the patient in the Trendelenburg position, these shoulder supports ensure patient protection without direct pressure on the brachial plexus, protecting against nerve damage.

| Description | Code |
|---|-------|
| Shoulder Supports - with Fitted Pads* | 10787 |
| Shoulder Supports - Replacement Pads (Left & Right) | 10706 |

*Requires 2 x Clamps (Code: 10761)

SHOULDER, SPINE & TORSO

The Hip-Fix™ opitek

Positioning for total hip replacement: accurate alignment for optimum surgical outcomes

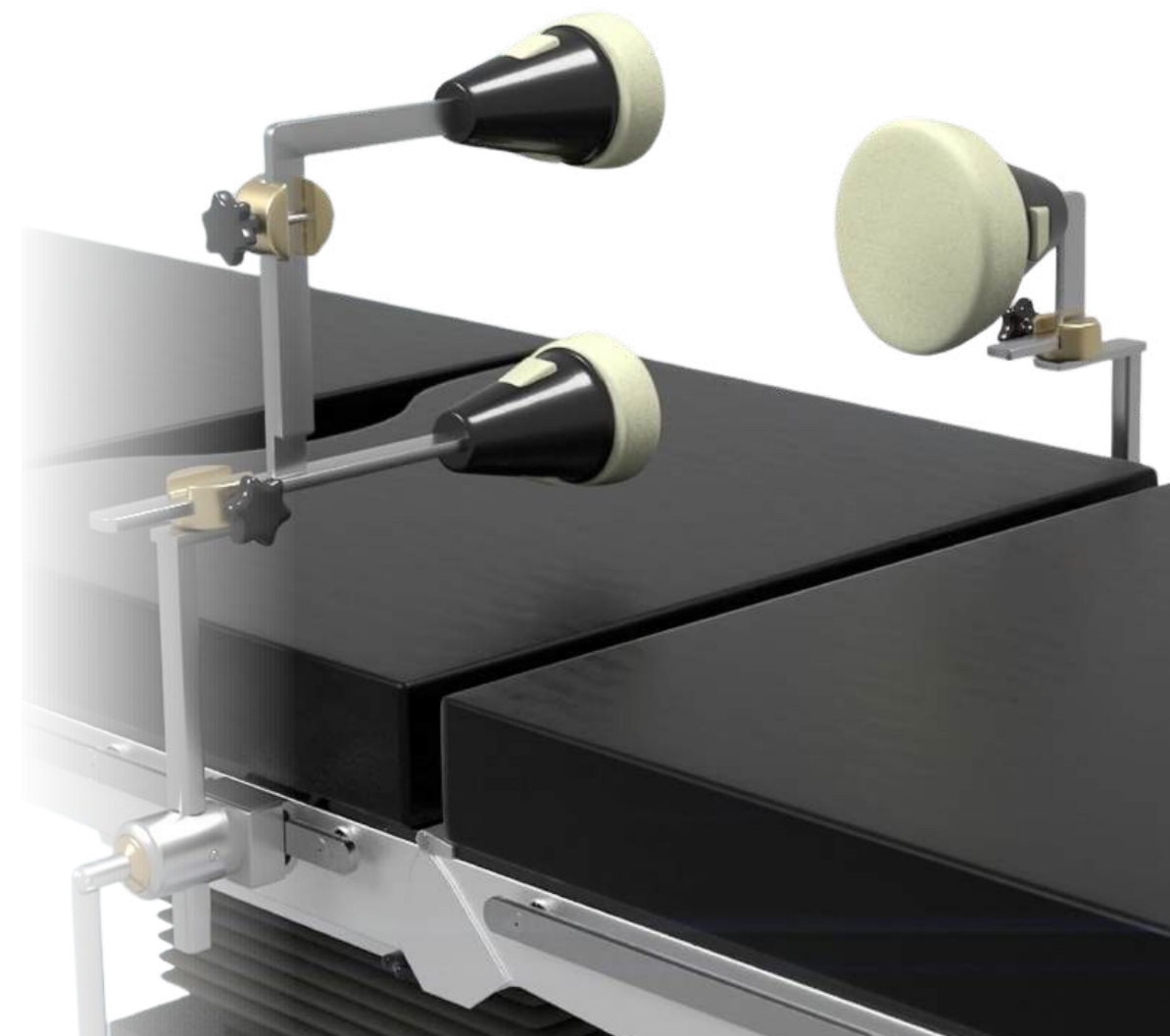
The Hip-Fix™, a product by Opitek, has a three-point fixation for the lateral positioning, securing both sides of the iliac crest plus the sacrum. This gives surgeon maximum access while maintaining total stability.

Although the position is rigidly maintained, there is no external pressure on the abdomen, ensuring greater patient comfort.

Features:

- **Over 20 years of clinical history**
- **Stability of patient position guaranteed throughout procedure**
- **Fitted with single-use pads, reducing risk of infection**
- **Abdomen free from external pressure during procedures**

| Description | Code |
|---|----------|
| Hip Fix™ (2015-200) 3-point Fixation System - uses disposable pads | 10470 |
| Hip Fix™ (2000-182) 3-point Fixation System - with fixed pads | 10470-A1 |
| Hip Fix™ (2000-182) 3-point Fixation System - individual support adjustment - disposable pads | 10470-A2 |
| Hip Fix™ (1900-01) 3-point Fixation System - individual support adjustment - fixed pads | 10470-A3 |
| Hip Fix™ Single-use Pad Set (2015-50) - includes one sacrum & two iliac crest positioner pads | 10470-P1 |
| Hip Fix™ Rotary Clamp (10-305-P) - Hook-on for UK Side Bar with Flat Pushing Plunge | 10470-C1 |
| Hip Fix™ Rotary Clamp (10-305-P) - Hook-on for EU Side Bar with Flat Pushing Plunge | 10470-C2 |
| Hip Fix™ Reusable Pad (2000-01) - Small / Iliac Crest - Front Support | 10470-P2 |
| Hip Fix™ Reusable Pad (2000-02) - Large / Sacral - Back Support | 10470-P3 |



GYNAE & UROLOGY

Lift-Assist™ Lithotomy Stirrups

Available in Standard, Finned Elite and Heavy Duty

Our boot type Lift-Assist™ Lithotomy Stirrups can significantly help to reduce risks for patients - particularly in procedures ranging from simple pelvic examinations, to surgeries in gynaecology, urology and other gastrointestinal specialisms.

Sold in pairs, they minimise pressure on the calf when moving the stirrup and the hydraulic mechanism allows easy movement of the leg when placing it in the desired position - without compromising the sterile field.

Our latest model, the **Finned Elite Stirrup**, offers a 'fin'-shaped support at the knee and provides even greater control when manoeuvring patient weights of up to 227kg.

Features:

- **Easy-to-use squeeze grip handles**
- **Hydraulic mechanism for power assisted movement**
- **Self-adjusting boots**
- **Multiple models for varying patient weights.**

| Description | Code |
|---|--------|
| Lift-Assist™ Lithotomy Stirrups - Standard - includes boot pads | *10755 |
| Lift-Assist™ Lithotomy Stirrups - Finned Elite - includes boot pads | *10757 |
| Lift-Assist™ Lithotomy Stirrups - Heavy Duty - includes boot pads | *10758 |

*Requires 2 x Clamps (Code: 10761)



The Lift-Assist™ Lithotomy Stirrups - the 'gold standard' of stirrups



GYNAE & UROLOGY



Lift-Assist™ Finned Elite Stirrups

The Lift-Assist™ Finned Elite Lithotomy Stirrups represent the “gold-standard” in lithotomy positioning. The finned protective boot design helps to reduce pressure under the popliteal fossa and superficial peroneal nerve.

| Description | Code |
|--|--------|
| Lift-Assist™ Lithotomy Stirrups - Finned Elite -includes boot pads | *10757 |

*Requires 2 x Clamps (Code: 10761)

Lift-Assist™ Stirrup Accessories

From storage carts to boot pads - we've got the perfect accessories for your Lift-Assist™ Lithotomy Stirrups.

| Description | Code |
|--|--------|
| Storage Cart - For Lift-Assist™ Lithotomy Stirrups | 10760 |
| Boot Pad - for Standard & Elite Stirrups | 691200 |
| Boot Pad - for Heavy Duty Stirrups | 691205 |
| Boot Pad - for PAL Pro® Stirrups | 691210 |
| Boot Pad - for Finned & Finned Elite Stirrups | 691215 |
| Clamp - Basic Blade Handwheel - for UK & EU Side Bar | 10761 |



Quick reference guide:

| STANDARD | FINNED ELITE | HEAVY DUTY |
|---|---|---|
| For patient weights up to 159 kg | For patient weights up to 227 kg | For patient weights up to 327 kg |
| | | |
| Handle type: Twist Grip | Handle type: Squeeze Grip | Handle type: Twist Grip |
| Boot type: Standard | Boot type: Protective Fin | Boot type: Enlarged Standard |
| Lithotomy range: +84° / -33° | Lithotomy range: +84° / -33° | Lithotomy range: +84° / -33° |
| Abduction range: +25° / -9° | Abduction range: +25° / -9° | Abduction range: +25° / -9° |
| Code: 10755 | Code: 10757 | Code: 10758 |

Simplicity™ Knee Crutch

A product from Baxter, the Simplicity™ Knee Crutch provides excellent patient comfort and precise surgical positioning for short duration procedures. The soft, flexible pad reduces popliteal pressure and the easy-to-use handles provide vertical adjustment from 40.5cm to 53cm with 360° horizontal rotation.

| Description | Code |
|--|-------|
| Simplicity™ Knee Crutch - includes Boot Pads* | 10765 |
| Boot Pads - for Simplicity™ Knee Crutch Stirrups | 10766 |

*Requires 2 x Clamps (Code: 10248)



QA4 Perineal Instrument Tray

Our high quality, stainless steel perineal instrument tray is ideal for gynaecology, urology and rectal procedures — fully compatible with our QA4™ Mobile Surgery System.

| Description | Code |
|--|-------|
| QA4 Perineal Instrument Tray - including locating pins | 10235 |

GYNAE & UROLOGY



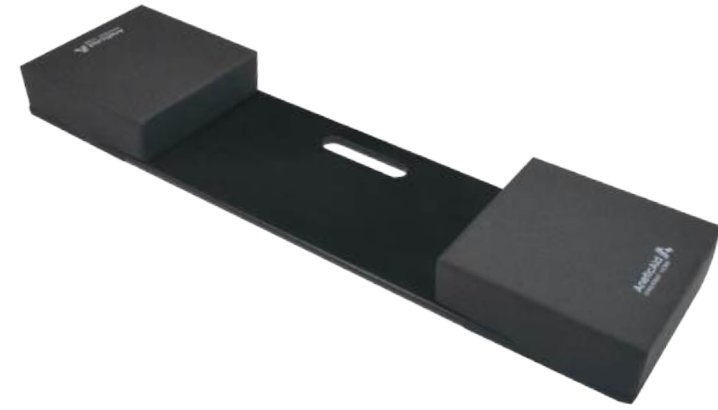
PediStirrup™

A product by Opitek®, the PediStirrup™ is the solution for paediatric laparoscopy and other paediatric procedures requiring lithotomy positioning, especially where intra-operative re-positioning may be required.

| Description | Code |
|---|----------|
| PediStirrup - Paediatric Leg Support System | 10480 |
| PediStirrup Cart | 10480-S1 |
| PediStirrup Clamp - for EU and UK Side Bar | 10480-C1 |
| PediStirrup - Strap for Boot 1 (PINK) & 2 (RED) - 220mm | 10480-V1 |
| PediStirrup - Strap for Boot 3 (GREEN) & 4 (YELLOW) - 300mm | 10480-V2 |
| PediStirrup - Strap for Boot 5 (BLUE) - 350mm | 10480-V3 |
| PediStirrup - Laser Positioner | 10480-W3 |



LEG, KNEE & FOOT



Abduction Board

Quick and convenient to use, this polypropylene board with removable pads allows for the board to be slid under the operating table mattress, creating a surface either side for abducting legs during vascular surgery.

| Description | Code |
|---|-------|
| Abduction Board (Varicose Vein) - with Pads | 10155 |
| Abduction Board (Varicose Vein) - Pads Only | 10156 |



Positioner - D-Shaped

This ergonomically shaped domed positioner is made from a polyurethane coated material, polyurethane foam and is perfectly suited to positioning legs with the knee raised.

| Description | Code |
|---|-------|
| Positioner - D-Shaped (Knee) - W550 x D300 x H175mm | 10295 |



Total Knee Stabiliser

A convenient, stable device to support the flexed leg during total knee procedures. The Total Knee Stabiliser eliminates awkward sandbags and simply mounts to the table rail.

| Description | Code |
|-----------------------------------|-------|
| Total Knee Stabiliser - with Pad* | 10785 |

*Requires 1 x Clamp (Code: 10250)

GENERAL

General

Our range of general theatre accessories provide patient security on the operating table and can be suitable for a range of different procedures.



Flexible Tube Holder - Large

This Flexible Tube Holder comes with a larger and longer flexible arm that can be adjusted to different angles - suitable for procedures where a number of cables or tubes need to be managed.

| Description | Code |
|------------------------------|-------|
| Flexible Tube Holder - LARGE | 10124 |



Anaesthetic Tube Holders — Flat & Angled

Quick and convenient to use, these natural polypropylene flat and right angled devices slide under the operating table mattress to offer superb airway tube management

| Description | Code |
|----------------------------------|-------|
| Anaesthetic Tube Holder - Flat | 10120 |
| Anaesthetic Tube Holder - Angled | 10122 |



Arm Retainers & Retainer Pads

Easy to use and made of natural polypropylene, our arm retainers slide under the operating table mattress to offer peace-of-mind protection.

| Description | Code |
|--|-------|
| Arm Retainer - L Shaped - L235 x H235 x W127mm | 10105 |
| Arm Retainer - J Shaped - L235 x H210 x W127mm | 10110 |
| Arm Retainer - L Shaped - L235 x H235 x W300mm | 10112 |
| Arm Retainer Pad | 10115 |
| Arm Retainer Pad - 300mm Wide | 10117 |



GENERAL



Anaesthetic Screen & Anaesthetic Screen Sleeve

This popular product is a traditional support for anaesthetic screens — and a replacement Ø55mm sleeve can also be purchased.

| Description | Code |
|--------------------------------|-------|
| Anaesthetic Screen - with Pad* | 10190 |
| Anaesthetic Screen Sleeve | 10192 |

*Requires 1 x Clamp (Code: 10250)



Security Strap

A product from Baxter®, these security straps loop around the side rail and adjust easily with buckles.

| Description | Code |
|--|-------|
| Security Strap - Medium - includes Padded Centre Section | 10792 |
| Security Strap - Large - includes Padded Centre Section | 10793 |



Crawford Wedges

The Crawford Wedges are wedge shaped pads that are made from polyurethane foam and a polyurethane coated material. They are originally designed for obstetrics to relieve maternal cardiovascular compromise and foetal stress in the supine position.

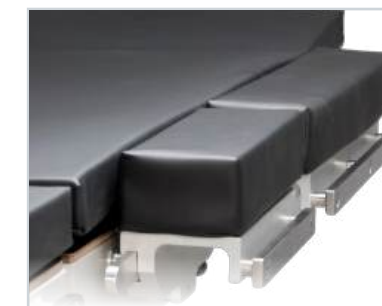
| Description | Code |
|--|-------|
| Crawford Wedge - Small (500 x 300 x 100mm) | 10550 |
| Crawford Wedge - Large (550 x 510 x 200mm) | 10555 |



Vacuum Positioners

These vacuum filled beanbag positioners are regularly used to stabilise a patient's position on the operating table. We offer a range of shapes and sizes from full body to head stabilisers.

| Description | Code |
|--|----------|
| Vacuum Positioner - 4FORM - BODY - L1000 x W750mm | 10275-A1 |
| Vacuum Positioner - 4FORM - HEAD - L300 x W400mm | 10278-A1 |
| Vacuum Positioner - 4FORM - FULL LENGTH - L2000 x W750mm | 10279-A1 |



Operation Table Widening Sections

A product by Reison Medical AB, these sections widen the upper or lower torso of an operating table to accommodate larger patients.

| Description | Code |
|---|-------------|
| Operation Table Widening Section - for EU Side Bar (10-421) - L240 x W125 x D85mm | 10450-EU-A1 |
| Operation Table Widening Section - for EU Side Bar (10-425) - L300 x W125 x D85mm | 10450-EU-A2 |
| Operation Table Widening Section - for EU Side Bar (10-422) - L445 x W125 x D85mm | 10450-EU-A3 |



Table Width Extender

This table width extender increases the support surface for larger patients and can be used individually or in multiples to create a custom platform.

| Description | Code |
|--|----------|
| Table Width Extender - for UK Side Bar - includes Pad - 75mm | 10788 |
| Table Width Extender - Replacement Pad - 75mm | 10788-P1 |

GENERAL



Sandbags

Our range of sandbags offer excellent positioning stability. The outer covers are made from the same easy-to-clean, breathable membrane used in our pressure care mattress range.

| Description | Code |
|---|-------|
| Sandbag - Rectangular - L220 x W150mm - SMALL | 10255 |
| Sandbag - Rectangular - L300 x W200mm - MEDIUM | 10256 |
| Sandbag - Rectangular - L380 x W250mm - LARGE | 10257 |
| Sandbag - Rectangular - L450 x W300mm - EXTRA LARGE | 10258 |





Needle Trier™ Device

It doesn't happen often, but if a suture drops onto the floor during a procedure, it's obviously essential to find - and find it quickly.

Our magnetic 'Needle Trier' is the perfect solution, reaching into awkward corners or under equipment - especially the operating table - easily and effectively.

| Description | Code |
|----------------------|-------|
| Needle Trier™ Device | 10796 |

Pre-operative Glove

A safe and hygienic way of removing hair from patients after shaving or clipping - reducing the risk of surgical site contamination and post-procedural infections.



| Description | Code |
|---|-------|
| Pre-operative Glove - Adhesive - Single-use | 11000 |



Surgeon's Stool - Cushion

A Ø330mm replacement cushioned pad for your non Anetic Aid surgeon's stool.

| Description | Code |
|------------------------------------|-------|
| Surgeon's Stool - Cushion - Ø330mm | 10130 |



Theatre Pillow

Tired of the number of pillows heading to the laundry, reducing their availability? This water-impermeable material-covered, superbly comfortable pillow reduces the turnaround time for pillows between uses.

| Description | Code |
|----------------|-------|
| Theatre Pillow | 10545 |



QA4 Mobile Accessory Stand

Accessories need storage when not in use — and we have the perfect solution.

Our QA4 Mobile Accessory Stand is a compact, mobile storage system which helps to keep a busy theatre environment tidy and uncluttered. The accessory stand comes equipped with EU-sized Side Bar.

| Description | Code |
|---|-------|
| QA4 Mobile Accessory Stand - with EU Side Bar | 21370 |



QA3 and QA4 Mattresses

Order replacements mattresses with waterproof zip for your QA3 Stretchers or mattress sections for your QA4 Mobile Surgery System.

PLEASE NOTE: Check your serial number to determine whether you need v2.0 or v3.0 mattresses— if it's lower than 11681 you'll need v2.0. If it's higher than 11680, it's v3.0.

| Description | Code |
|--|--------|
| Replacement Mattress with Waterproof Zip - Pressure Care | 21186 |
| Replacement Mattress with Waterproof Zip - Pressure Care - for QA3 v2.0 Design | 21184 |
| Replacement Mattress - for Standard Head Section - Pressure Care | 21360H |
| Replacement Mattress - for Upper & Lower Torso Section - Pressure Care | 21360B |
| Replacement Mattress - for Leg Sections - Pressure Care | 21360L |



SOCIAL VALUE



MADE IN THE UK



CARBON NEUTRAL

GENERAL - CLAMPS

Discover our huge range of clamps

We offer a full range of clamps, both direct-on and fixed, for UK and EU Side Bar.

Compatible with a huge range of our Operating Theatre Accessories, these clamps provide security and stability for many different procedures - including gynaecology, urology, ophthalmology and many more!



General Clamps

Our range of general non-product specific clamps help with a wide range of accessories, and are fully compatible with our QA4™ Mobile Surgery System — helping to secure your accessories safely and effectively.

| Description | Code |
|---|----------|
| Clamp - Socket - Stainless Steel - for UK, EU & US Side Bar | 10248 |
| Clamp - Universal (Socket & Rail) - Handwheel - for UK, EU & Swiss Side Bar | 10250 |
| Clamp - Socket - Handwheel (10-301) - for EU Side Bar | 10250-EU |
| Clamp - Socket - Handwheel (10-301-UK) - for UK Side Bar | 10250-UK |
| Clamp - Basic Blade Handwheel - for UK & EU Side Bar | 10761 |
| Clamp - Clip-on™ Blade Handwheel - for UK Side Bar | 10763 |
| Clamp - Clip-on™ Blade Handwheel - for EU Side Bar | 10764 |



Product-Specific Clamps

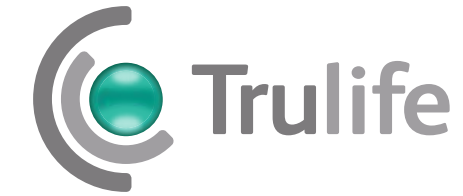
Our product-specific clamps go hand-in-hand with a range of products we supply, which you can find listed below:

- Gardiner Hand Surgery System (10248-B1 / 10248-B2)
- PediStirrup (10480-C1)
- Lift-Assist™ Beach Chair (10786-K2)
- Hip Fix™ System (10470-C1 / 10470-C2)

| Description | Code |
|---|----------|
| Clamp - Socket - Stainless Steel (10-308-UK) - Hook on with Lever Lock - UK Side Bar - V STUD | 10248-B1 |
| Clamp - Socket - Stainless Steel (10-307) - Hook on with Lever Lock - EU Side Bar - V STUD | 10248-B2 |
| PediStirrup Clamp - for EU & UK Side Bar | 10480-C1 |
| Clamp - for Lift-Assist™ Beach Chair - for EU Side Bar | 10786-K2 |
| Hip Fix™ Rotary Clamp (10-305-P) - Hook-on for UK Side Bar with Flat Pushing Plunge | 10470-C1 |
| Hip Fix™ Rotary Clamp (10-305-P) - Hook-on for EU Side Bar with Flat Pushing Plunge | 10470-C2 |

PRESSURE RELIEVING GEL SUPPORTS

Introducing our pressure relieving gel support range - brought to you by Trulife.



Trulife is internationally based with over 60 years' experience in the creation, development and manufacturing of niche healthcare and consumer products.

With a partnership of over 25 years, we're proud to bring Trulife's extensive range of Pressure Relieving Gel Supports directly to you. From head rings to full body positioning systems, we've got you covered.

Combining Trulife's expertise and Anetic Aid's superb distribution, you can rest assured that the products we bring you are the highest quality to suit your needs.

Thinking about pressure care? Think Anetic.



SOCIAL VALUE



MADE IN THE UK



CARBON NEUTRAL

Head & Neck

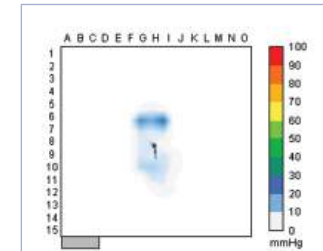
Pressure, the amount of force exerted on a given area is often measured in millimetres of mercury (mmHg).

When a force or pressure greater than normal capillary pressure is exerted on a body over time, this can restrict blood flow to the area and cause serious tissue damage.

It is therefore important to reduce this pressure, particularly with the more susceptible parts of the body such as the head in periods of immobility e.g. surgery.

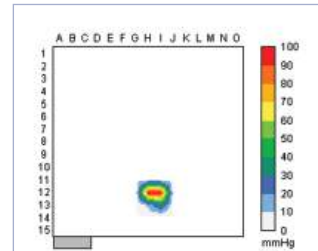
Our range of head and neck pressure care supports relieve pressure by increasing the area of contact between the body and the supporting surface.

Using the gel head supports, as shown by the tables below, can reduce pressure significantly in comparison to not using a protective pad.



Head
with protective pad

Average pressure 10.3mmHg



Head
without protective pad

Average pressure 64.1mmHg



Oasis+ Head & Neck Support

The Oasis+ Head & Neck Support incorporates silicone gel technology and is popular in ENT for septoplasty, some laryngoscopy cases and thyroidectomy. It also has anti-slip properties for additional safety.

| Description | Code |
|---|-------|
| Oasis+ Head & Neck Support (OP151) - 264 x 220 x 64mm | 10900 |



Azure Head Protector

The dual layer Azure Head Protector (AZ100) incorporates gel technology and is innovatively designed to contour to the individual patient's head. It conforms comfortably while providing effective protection to the patient.

| Description | Code |
|---|-------|
| Azure Head Protector (AZ100) - 260 x 250 x 50mm | 10885 |

Clearview Prone Headrest

NEW

A product by Trulife, the Clearview Prone Headrest raises and supports the head while offering maximum pressure relief. With a clear acrylic base and mirror, this headrest allows the patient's eyes to be monitored.

In addition, the chin and forehead silicone positioners can be adjusted to suit the patient's head, whereas the swept cut-outs allow room for tracheal intubation.

Features:

- Dimensions - 300 x 230 x 200mm
- Clear acrylic base and mirror
- Chin and forehead silicone positioners
- Swept cut-outs in base

| Description | Code |
|--|----------|
| Clearview Prone Headrest (CVP01) | 10989 |
| Clearview Prone Headrest - Foam Face Disposables (CVF01) | 10989-F1 |



HEAD & NECK



Oasis Closed Headrings

With a unique gel and foam combination that conforms comfortably to the patient's head, the Oasis Closed Headrings are suitable for use in many surgical procedures.

| Description | Code |
|---|-------|
| Oasis Closed Headring (OA010) - Ø90 x 20mm | 10801 |
| Oasis Closed Headring (OA011) - Ø140 x 35mm | 10802 |
| Oasis Closed Headring (OA012) - Ø200 x 35mm | 10803 |



Oasis Open Headrings

Soft, comfortable and durable, the Oasis Open Headrings support the patient's face, while allowing easy access for intubation during surgery.

| Description | Code |
|---|-------|
| Oasis Open Headring (OA021) - Ø140 x 35mm | 10805 |
| Oasis Open Headring (OA022) - Ø200 x 50mm | 10806 |



Oasis Elite Closed Headrings

Containing a unique gel and foam combination, and 50% lighter than comparable gel-only products, the Oasis Elite Closed Headrings are suitable for use in many surgical procedures.

| Description | Code |
|---|-------|
| Oasis Elite Closed Headring (EL011) - Ø140 x 34mm | 10861 |
| Oasis Elite Closed Headring (EL012) - Ø200 x 50mm | 10862 |



Oasis Elite Open Headrings

Crafted from a unique gel and foam combination, the Oasis Elite Open Headrings gently conform to the contours of the patient's face to minimise pressure and maximise comfort. The open-centre design also allows for safe intubation.

| Description | Code |
|---|-------|
| Oasis Elite Open Headring (EL021) - Ø140 x 34mm | 10863 |
| Oasis Elite Open Headring (EL022) - Ø200 x 50mm | 10864 |



Oasis Elite Prone Head Rests

The Oasis Elite Prone Head Rests incorporate a combination of silicone gel and foam technology, and are anatomically designed so that the patient's head can comfortably rest face down with respiratory tubes in place.

| Description | Code |
|---|-------|
| Oasis Elite Prone Head Rest (EL141) - 280 x 240 x 140mm | 10871 |
| Oasis Elite Prone Head Rest (EL142) - 273 x 220 x 135mm | 10872 |

HEAD & NECK



Oasis Elite Supine Head Rests

The Oasis Elite Supine Head Rests incorporate a combination of silicone gel and foam technology, and are ideal for positioning the patient during eye surgery and other supine procedures.

| Description | Code |
|---|-------|
| Oasis Elite Supine Head Rest (EL151) - 275 x 237 x 90mm | 10873 |
| Oasis Elite Prone Head Rest (EL152) - 275 x 230 x 65mm | 10874 |



ARM & HAND

ARM & HAND

Oasis Ulnar / Brachial Nerve Protector



The Oasis Ulnar / Brachial Nerve Protectors incorporate silicone gel technology and are essential for providing protection to the sensitive areas of the elbows and arms.

| Description | Code |
|--|-------|
| Oasis Ulnar / Brachial Nerve Protector (OA061) - 460 x 210 x 8mm | 10829 |



Oasis Extremity Belt

Supplied in pairs, the Oasis Extremity Belt is used in many procedures for extra security in maintaining the position of extremities on the operating table.

| Description | Code |
|--|-------|
| Oasis Extremity Belt (OA113) - 315 x 45 x 10mm | 10843 |

Arm & Hand

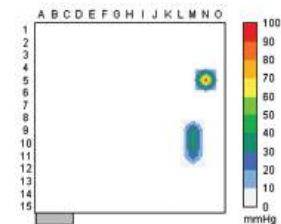
Our range of armboards and protectors are x-ray translucent, contain medical grade silicone and are designed to cradle the arm, ensuring effective pressure relief during a whole range of surgical procedures.



Oasis Contoured Armboard / Knee Pad

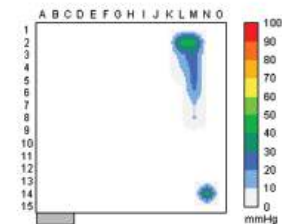
This contoured armboard pad incorporates medical grade silicone gel technology, and has been designed for use on a standard table extension. Its contoured shape provides excellent protection as well as keeping the arm in place.

| Description | Code |
|--|-------|
| Oasis Contoured Armboard / Knee Pad (OA101) - 510 x 150 x 35mm | 10833 |



Arm without protective pad

Average pressure 35.9mmHg



Arm with protective pad

Average pressure 23.1mmHg



Oasis Arm Retainer Pad

This Oasis Arm Retainer Pad has been specially designed to fit Perspex / acrylic arm supports.

| Description | Code |
|---|-------|
| Oasis Arm Retainer Pad (OA100) - 170 x 110 x 18mm | 10834 |

Oasis Armboard Pads

The Oasis Armboard pads incorporate silicone gel technology and provide the necessary protection whenever the arm is extended on an armboard.

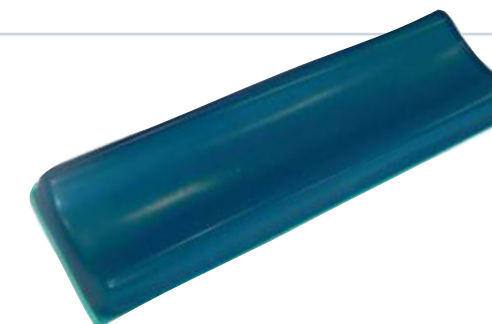
| Description | Code |
|---|-------|
| Oasis Armboard Pad (OA070) - 395 x 115 x 10mm | 10830 |
| Oasis Armboard Pad (OA071) - 600 x 200 x 10mm | 10831 |
| Oasis Armboard Pad (OA072) - 600 x 125 x 10mm | 10832 |



Oasis Elite Contoured Armboard / Knee Pad

This anatomically shaped armboard pad, available in two different sizes, incorporates silicone gel technology and provides additional support and stability to the arm in a variety of procedures.

| Description | Code |
|--|-------|
| Oasis Elite Contoured Armboard / Knee Pad (EL401) - 510 x 155 x 40mm | 10869 |
| Oasis Elite Contoured Armboard / Knee Pad (EL402) - 395 x 140 x 40mm | 10870 |



Oasis Elite Armboard Pads

These flat armboard pads have a slight indentation to cradle the arm and provide effective pressure relief during various surgical procedures.

| Description | Code |
|---|-------|
| Oasis Elite Armboard Pad (EL070) - 400 x 125 x 20mm | 10867 |
| Oasis Elite Armboard Pad (EL072) - 600 x 125 x 20mm | 10868 |



Azure Arm Protectors

The Azure Arm Protectors incorporate gel technology and assume the shape of the individual patient's arm, acting as a second layer of tissue and offering excellent protection against nerve damage.

| Description | Code |
|--|-------|
| Azure Arm Protector (AZ200) - 330 x 140 x 30mm | 10889 |
| Azure Arm Protector (AZ201) - 460 x 180 x 35mm | 10890 |



SHOULDER, SPINE & TORSO



Oasis Elite Large Prone Positioner - Montreal Laminectomy

The Oasis Elite Large Prone Positioner eliminates pressure on the abdomen and facilitates easy ventilation and circulation during long cases in the prone position e.g. laminectomy procedures.

| Description | Code |
|---|-------|
| Elite Foam Large Prone Positioner (EL904) - Montreal Laminectomy - 1115 x 520 x 140mm | 10990 |



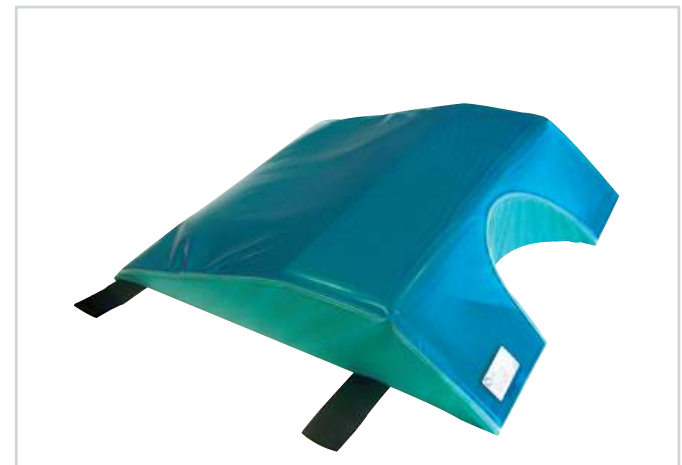
Elite Foam Prone Positioner - Montreal Laminectomy

This Elite Foam Prone Positioner is suited to relieving pressure on the abdomen during lone procedures in the prone position.

| Description | Code |
|--|-------|
| Elite Foam Prone Positioner (ELP914) - Montreal Laminectomy - 1014 x 480 x 140mm | 10876 |

Shoulder, Spine & Torso

With shoulder, spine and torso procedures requiring an additional level of security and stability, our range of gel supports allow for effective pressure relief and secure supine, lateral or prone positioning.



Oasis Elite Prone Chest Positioner

The Oasis Elite Prone Chest Positioner combines gel and foam technology and has been designed to provide effective positioning to the patient during surgical procedures in the prone position.

| Description | Code |
|--|-------|
| Oasis Elite Prone Chest Positioner (EL903) - 610 x 530 x 130mm | 10883 |

SHOULDER, SPINE & TORSO

Incline Positioning System™

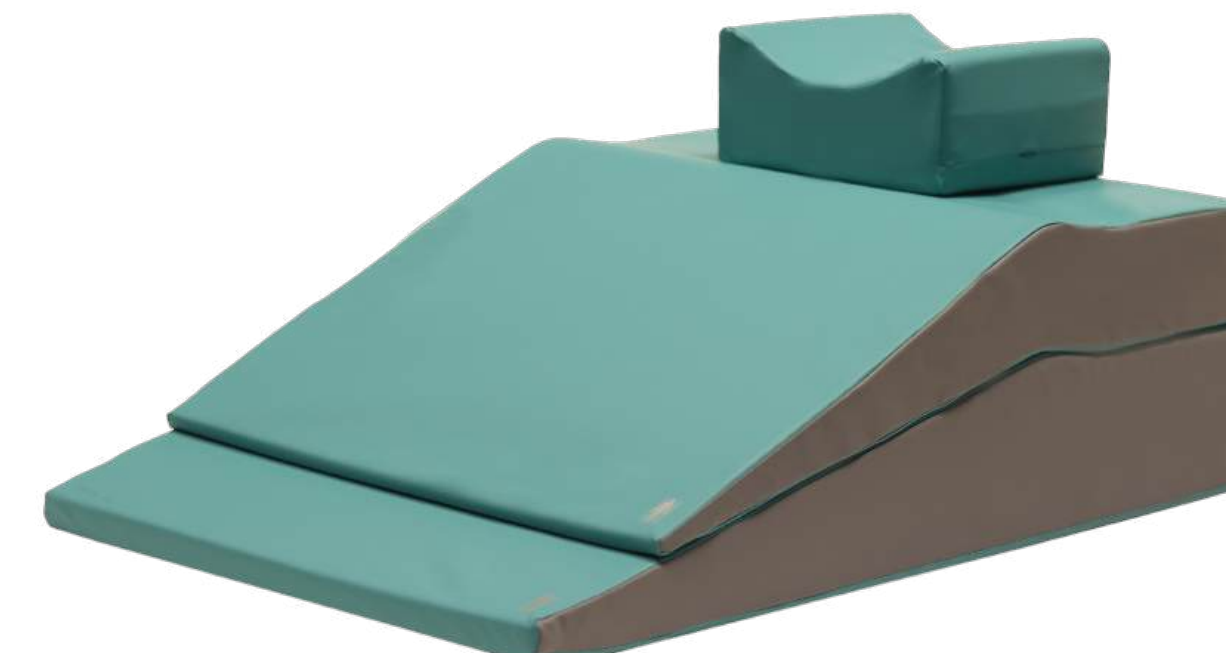
NEW

A product by Trulife, the Incline Positioning System™ allows for safe and efficient patient positioning, supports airway access and pressure injury prevention.

Designed specifically for bariatric patients, or patients with difficult airways, this versatile three-piece system is easy-to-use, setup and versatile for a variety of clinical procedures.

Benefits include:

- **Safe Positioning** - achieves clinically recommended H.E.L.P / ramped positions quickly and reliably
- **Pressure Care built in** - distributes pressure across head and torso, reducing pressure injury risk and improving patient comfort
- **Surgical Versatility** - can be used as one piece, two-piece combos, or as a full system depending on patient weights and clinical needs
- **Durability & Reliability** - built for long-term and repeated use



| Description | Code |
|---|-------|
| Incline Positioning System™ (ELP800) - Headrest, Boost & Base | 10998 |

SHOULDER, SPINE & TORSO



Oasis Elite Dome Positioner

This lightweight Oasis Elite Dome Positioner incorporates medical grade silicone gel technology, and can be used to position and protect the patient during various surgical procedures in all positions.

| Description | Code |
|--|-------|
| Oasis Elite Dome Positioner (EL210) - 350 x 150 x 75mm | 10876 |



Oasis Elite Flat Bottom Chest Rolls

The Oasis Elite Flat Bottom Chest Rolls combine a unique gel and foam technology and means they are up to 75% lighter than comparative gel products - allowing for easy manipulation by OR staff.

| Description | Code |
|--|-------|
| Oasis Elite Flat Bottom Chest Roll (EL214) - 300 x 140 x 110mm | 10877 |
| Oasis Elite Flat Bottom Chest Roll (EL215) - 400 x 140 x 110mm | 10878 |
| Oasis Elite Flat Bottom Chest Roll (EL216) - 505 x 140 x 110mm | 10879 |
| Oasis Elite Flat Bottom Chest Roll (EL217) - 405 x 150 x 150mm | 10880 |
| Oasis Elite Flat Bottom Chest Roll (EL218) - 510 x 150 x 150mm | 10881 |



Oasis Flat Bottom Chest Rolls

The Oasis Flat Bottom Chest Rolls, designed for multiple age groups, are 100% silicone gel and provide excellent positioning and stability for a range of different procedures.

| Description | Code |
|--|-------|
| Oasis Flat Bottom Chest Roll (OA211) - 305 x 95 x 75mm | 10854 |
| Oasis Flat Bottom Chest Roll (OA212) - 405 x 95 x 75mm | 10855 |
| Oasis Flat Bottom Chest Roll (OA213) - 505 x 92 x 75mm | 10856 |

GYNAE & UROLOGY

Gynae & Urology

Both the Oasis Crutch Stirrup Pads and the state-of-the-art Azure Sacral Protector offer effective pressure relief in the supine and lithotomy positions - suited perfectly for gynaecology and urology procedures.

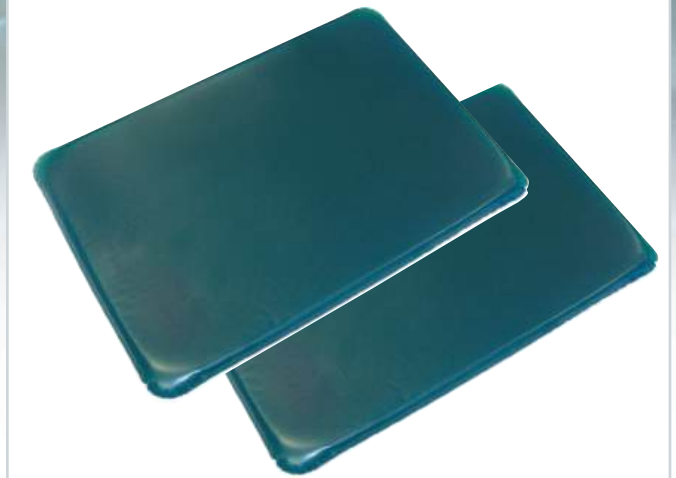


Azure Sacral Protector

Azure's revolutionary gel combination for the Azure Sacral Protector (AZ300) works together to replicate and act as an additional layer of protective tissue and skin. It conforms to the individual's shape in a more contoured and effective manner, meaning more protection against nerve damage as well as pressure sore prevention.

The sacral area is one of serious risk if left unprotected. This sacral protector has been designed to provide support in the supine and lithotomy positions, relieving pressure and focussing on peripheral support.

| Description | Code |
|---|-------|
| Azure Sacral Protector (AZ300) - 400 x 280 x 25mm | 10888 |



Oasis Crutch Stirrup Pads

These Oasis Crutch Stirrup Pads incorporate medical grade silicone gel technology, are supplied in pairs and designed to fit most types of stirrups.

| Description | Code |
|---|-------|
| Oasis Crutch Stirrup Pad (OA090) - 320 x 220 x 10mm | 10838 |
| Oasis Crutch Stirrup Pad (OA091) - 395 x 245 x 10mm | 10839 |
| Oasis Crutch Stirrup Pad (OA092) - 520 x 300 x 10mm | 10840 |



LEG, KNEE & FOOT



Azure Leg Protector

The Azure Leg Protector provides overall protection to heel and leg area. Incorporating gel technology and slightly raised behind the knee, the leg protector offers protection to the popliteal nerve and conforms superbly around the leg.

| Description | Code |
|--|-------|
| Azure Leg Protector (AZ400) - 515 x 180 x 40mm | 10892 |



Azure Heel Protector

The heel area is one of extreme risk during any surgical procedure and special attention should be given to avoid any unnecessary damage. These lightweight, state-of-the-art gel protectors are supplied in pairs and provide heel protection, stability and support.

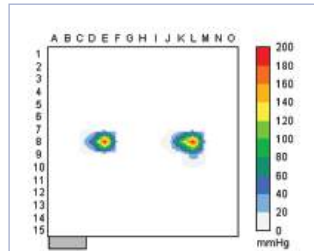
| Description | Code |
|---|-------|
| Azure Heel Protector (AZ401) - 515 x 180 x 40mm | 10891 |

Leg, Knee & Foot

The anatomy of the heel - its combination of nerves and lack of soft tissue over the bone - make it one of the most vulnerable parts of the body during surgery. This becomes more of an issue when the patient is in a supine position.

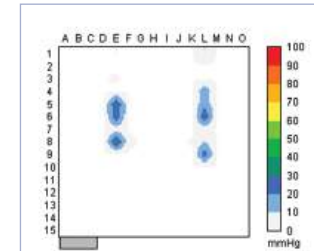
Our full range of leg, knee and foot supports not only reduce average pressure by almost 79% compared to not using one, but also offer superb patient positioning and protection.

The Azure range also comes with the additional benefit of advanced surgical positioning, with its revolutionary new gel combination. The material used in the Heel and Leg Protectors acts as an additional layer of skin and soft tissue - contouring to the individual's shape and redefining pressure care.



Heels without protective pads

Average pressure 65.2mmHg



Heels with protective pads

Average pressure 13.9mmHg



Oasis & Oasis Elite Heel Pads

These 100% silicone gel pads are supplied in pairs, and are suitable for use in any supine procedure where the heels are at risk of skin breakdown and damage. The Oasis Elite Heel Pads combine foam and gel to provide maximum protection for the heels.

| Description | Code |
|---|-------|
| Oasis Heel Pads (OA130) - 180 x 100 x 70mm | 10845 |
| Oasis Elite Heel Pad (EL130) - 180 x 100 x 70mm | 10875 |



Oasis Heel Cups

Oasis Heel Cups incorporate silicone gel technology, and are designed to provide pressure relief for patient's heels. They are suitable for use during and after most surgical procedures or patients who are confined to bed.

| Description | Code |
|--|-------|
| Oasis Heel Cup (OA131) - 105 x 90 x 43mm | 10846 |



Oasis Elite Lateral Leg Positioner

This product is used to position the legs in a lateral position for kidney and hip surgery. It incorporates a silicone gel and foam combination and allows for knee and hip flexion.

| Description | Code |
|--|-------|
| Oasis Elite Lateral Leg Positioner (EL800) - 650 x 400 x 230mm | 10992 |



Oasis Heel & Ankle Protector

These unique pads incorporate silicone gel technology, and are designed to fit around the heel and ankle like a boot with Velcro attachment - useful for when the patient is in the supine or lateral positions.

They can also be used as a protector for the ankle and foot when using conventional ankle strap stirrups and lithotomy poles.

| Description | Code |
|--|-------|
| Oasis Heel & Ankle Protector (OA200) - 1250 x 120 x 10mm | 10853 |





Azure Universal Positioner

The versatile and lightweight Azure Universal Positioner (AZ500) incorporates silicone gel technology and can be used to position and protect the patient in a variety of surgical procedures.

| Description | Code |
|---|-------|
| Azure Universal Positioner (AZ500) - 425 x 155 x 60mm | 10893 |



Oasis Elite Lateral Positioner

Incorporating a combination of silicone gel and foam technology, this positioning device permits a safe, quick and easy transition from supine to lateral - and is designed for use in hip replacement, shoulder, kidney and other procedures.

| Description | Code |
|--|-------|
| Oasis Elite Lateral Positioner (EL900) - 720 x 500 x 160mm | 10882 |



Oasis Elite Table Pads

The Oasis Elite Table Pads can be used to protect the body in all surgical positions. The ultra light weight pad consists of a foam base and a gel top, allowing for easy carrying and manipulation by OR staff.

| Description | Code |
|--|-------|
| Oasis Elite Table Pad (ELO30) - Universal - 520 x 520 x 30mm | 10865 |
| Oasis Elite Table Pad (ELO31) - 3/4 Length - 1150 x 520 x 10mm | 10866 |

General

Our range of general pressure relieving gel supports can be used to suit a wide range of surgical procedures.

Nelo™

NEW

A product by Trulife, the Nelo™ is a versatile, dual-layer, universal positioner. It can be manipulated to support any part of the body whilst still giving the stability, comfort, relief and neutral body positioning required. Nelo has a dual layer design which helps the anti-bottoming out, providing constant pressure relief. It can also be rolled, folded and stacked, allowing for it to be used in a range of procedures.

Benefits include:

- Made out of trusted, high-quality and durable materials
- Can be rolled, folded and stacked
- Nesting feature brings a contour shape to the body - allowing for extra support and stability
- Dual-layer design
- Constant pressure relief - no matter the procedure

| Description | Code |
|---|-------|
| Nelo - Universal Positioner - Small - (NE100) - 395 x 115 x 10mm | 10960 |
| Nelo - Universal Positioner - Medium - (NE200) - 240 x 490 x 40mm | 10962 |
| Nelo - Universal Positioner - Large - (NE300) - 440 x 590 x 40mm | 10964 |



SOCIAL VALUE



MADE IN THE UK



CARBON NEUTRAL

Introducing the Nelo™ - the new, dual-layer universal positioner



Azure Profile Pads

These Azure Profile Pads combine the ultra-soft and lightweight silicone material on the base and the cured silicone gel on top, with a unique squared profile that cushions the body during surgery.

| Description | Code |
|--|-------|
| Azure Profile Pad (AZ610) - Universal - 520 x 520 x 10mm | 10886 |
| Azure Profile Pad (AZ610) - 3/4 Length - 1150 x 520 x 10mm | 10887 |



Oasis Universal Patient Positioners

The Oasis Universal Patient Positioners are 100% silicone gel and suitable for safe and effective positioning during all surgical procedures.

| Description | Code |
|---|-------|
| Oasis Universal Patient Positioner (OA050) - 150 x 60 x 40mm | 10823 |
| Oasis Universal Patient Positioner (OA051) - 330 x 70 x 50mm | 10824 |
| Oasis Universal Patient Positioner (OA052) - 290 x 100 x 60mm | 10825 |
| Oasis Universal Patient Positioner (OA053) - 345 x 120 x 70mm | 10826 |



Oasis Standard Operating Table Pads

The Oasis Standard Operating Table Pads, measuring a range of sizes, incorporate silicone gel technology and provide protection over particular areas of the operating table, ranging from a universal size to the entire table. The pads are flexible, soft, comfortable and used with patients in all positions.

| Description | Code |
|--|-------|
| Oasis Standard Operating Table Pad (OA030) - Universal - 520 x 520 x 10mm | 10807 |
| Oasis Standard Operating Table Pad (OA031) - 3/4 Length - 1150 x 520 x 10mm | 10808 |
| Oasis Standard Operating Table Pad (OA032) - Full Length - 1800 x 520 x 10mm | 10809 |



Oasis+ Non-Slip Disc

Supplied in boxes of 10, these Ø200 Oasis+ Non Slip Discs help to support our range of gel products in place and aid in slip reduction.

| Description | Code |
|---|-------|
| Oasis+ Non-slip Disc (OP015) - Ø200 x 4mm | 10975 |



Oasis Paediatric Operating Table Pad

Used to protect paediatric patients during all surgical procedures, this full length Oasis Operating Table Pad incorporates silicone gel technology and can be used as a mattress overlay in hospital beds.

| Description | Code |
|---|-------|
| Oasis Paediatric Operating Table Pad (OA033) - Full Length - 605 x 335 x 10mm | 10810 |



Oasis Perineal Table Pad

This Oasis Perineal Pad provides excellent protection to the sacral area, a point of maximum pressure in surgeries requiring the lithotomy position.

| Description | Code |
|---|-------|
| Oasis Perineal Table Pad (OA040) - 520 x 520 x 10mm | 10816 |



Oasis Operating Table Pad - Torso Section with Cut-out

This Oasis Operating Table pad incorporates silicone gel technology and is specifically designed for use on the torso. Useful on sectioned operating tables, the torso section has a perineal cut-out and provides protection during a variety of surgical procedures, including orthopaedics and urology.

| Description | Code |
|---|-------|
| Oasis Operating Table Pad (OA037) - Torso Section with Cut-out - 900 x 500 x 10mm | 10813 |





Oasis Elite Lateral Park Bench Positioner

This park bench positioner allows for easier access to the Posterior Fossa in the skull, all whilst relieving pressure for the patient.

| Description | Code |
|---|-------|
| Oasis Elite Lateral Park Bench Positioner (EL913) | 10995 |



Oasis Face Pads

The Oasis Face Pad uses silicone gel technology and is ergonomically designed to protect the patient's forehead from pressure caused by endotracheal tubes.

| Description | Code |
|---|-------|
| Oasis Face Pad (OA140) - 165 x 80 x 8mm | 10849 |



Oasis Patient Positioning Belt

The Oasis Patient Positioning Belt incorporates silicone gel technology, ensuring patient safety by providing stability and tissue protection on the operating table. By using the clip-lock attachment, the belt can be easily adjusted to fit all operating tables.

| Description | Code |
|---|-------|
| Oasis Patient Positioning Belt (OA110) - 505 x 85 x 8mm - with 2350mm Strap | 10842 |

Elite Foam ARDS Prone Positioning System

A product by Trulife, the ARDS Prone Positioning System's anatomical design conforms to the body shape of the patient in the prone position, relieving pressure on the diaphragm to encourage respiratory function. Part of the lightweight Elite Foam range, it is ideal for use during surgery or in intensive care.

Features:

- Made up of 5 separate positioning pads
- Single use headrests
- Lightweight and easy to use
- High-quality reusable components
- Versatile design

| Description | Code |
|--|----------|
| Elite Foam ARDS Prone Positioning System (ELP200) | 10991 |
| Elite Foam ARDS Prone Positioning System - Disposable Prone Head Positioner (ELP141) | 10991-A1 |



PATIENT POSITIONS

SUPINE

The patient is on their back with their face up towards the ceiling. Their legs are uncrossed and their arms are at their sides or on arm boards. Can be used in Trendelenburg and Reverse Trendelenburg.

Used in:
 - Administration of General Anaesthesia
 - Abdominal surgery
 - Open heart surgery
 - Surgery of the face, neck or mouth
 - Most surgery on extremities.



PRONE

The patient is on their abdomen, and their arms are at their sides or on armboards. This includes the Kraske 'Jack Knife' Position.

Used in:
 - Surgeries to the back
 - Surgeries to the spine
 - Surgeries to the back of the legs



LATERAL

The patient is on their side, with their bottom leg flexed and their top leg straight. The bottom arm is supported on an armboard, and the top arm has special support.

Used in:
 - Surgeries to the chest or lungs
 - Surgeries on the kidneys
 - Hip surgery



LITHOTOMY

The patient is on their back, their legs are lifted in stirrups and their arms are usually on arm boards.

Used in:
 - Gynaecological surgery
 - Genitourinary (GU) surgery
 - Urology

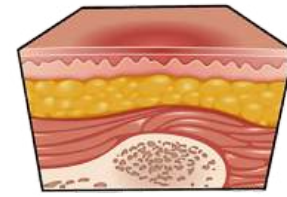


Pressure Related Injuries - what causes pressure ulcers?

A decubitus ulcer, or pressure sore, is an injury to the skin caused by constant pressure resulting from impaired mobility.

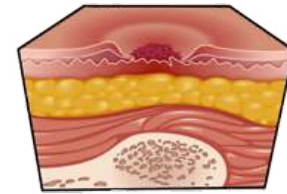
The pressure of the patient's body weight reduces blood flow - particularly to bony extremities - eventually causing cell death, skin breakdown, and the development of an open wound.

There are four stages, which are determined as follows:



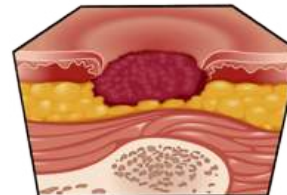
Stage 1

Skin may appear reddened, like a bruise. The integrity of the skin remains intact - there are no breaks or tears, but the area is at high risk of further breakdown.



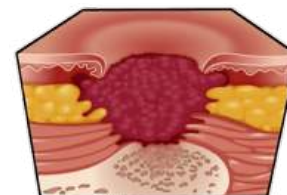
Stage 2

Skin breaks open, wears away, and forms an open sore or 'ulcer'.



Stage 3

The sore worsens and extends beneath the skin surface, forming a small crater. There may be no pain at this stage due to nerve damage. Risk of tissue death and infection are high.



Stage 4

Condition becomes more severe with extensive damage to deeper tissues (muscles, tendons and bones). Serious complications, such as osteomyelitis (infection of the bone) or sepsis (infection carried through the blood) can occur.

PRESSURE INJURY PREVENTION

Implications for Clinical Practice

There are several major implications for clinical practice within the operating room if pressure injuries are poorly managed. The implications state that:

- Operating departments should have clinical guidelines covering the prevention of pressure injuries
- Perioperative practitioners should play a pivotal role in ensuring the patient receives adequate pressure injury protection and act as the patient advocate during surgery
- The operating room team should be fully briefed on the pressure care needs of the patient
- Each operating room should be adequately equipped with a full range of suitable pressure redistributing devices
- Perioperative practitioners should be adequately trained in pressure injury prevention and the use of pressure redistributing devices

Preventative Measures

Aimed at all healthcare professionals, NICE guidelines focusing on pressure injury prevention recommend comprehensive advice on all patients from neonates to adults including:

- Risk assessment
- Skin assessment
- Repositioning
- Skin massage
- Nutritional supplements and hydration
- Pressure redistributing devices
- Barrier creams
- Care planning
- Patient and care information



DID YOU KNOW?

We also offer on-site training in our pressure injury prevention range to ensure you can provide the highest level of care for your patients!



STAINLESS STEEL THEATRE FURNITURE

Instrument & Dressing Trolleys

We offer a wide range of Instrument and Dressing Trolleys and every component is quality hallmarked.

Each product is individually inspected and available for immediate dispatch.

All our Instrument Trolleys have fixed downturned shelves, come complete with Stainless Steel bright polished frames and use only British Standard recommended gauge 304 stainless steel. All shelves are 2mm thick with a 240 silicon grain ultra smooth satin finish. The castors are twin-wheeled, non-corrosive and ideal for modern clinical areas.

Our dressing trolleys come with the same specifications, but have fixed upturned shelves which are ideal for anaesthetic and recovery room areas.

Features:

- Range of different sizes
- Fixed downturned / upturned shelves
- High-quality stainless steel finish
- Non-corrosive, twin-wheeled castors

| Description | Code |
|---|-------|
| Instrument Trolley - 450 x 450 x 850mm - with Fixed DT Shelves | 25000 |
| Instrument Trolley - 600 x 450 x 850mm - with Fixed DT Shelves | 25010 |
| Instrument Trolley - 750 x 450 x 850mm - with Fixed DT Shelves | 25020 |
| Instrument Trolley - 900 x 450 x 850mm - with Fixed DT Shelves | 25030 |
| Instrument Trolley - 1200 x 450 x 850mm - with Fixed DT Shelves | 25040 |
| Instrument Trolley - 1200 x 600 x 850mm - with Fixed DT Shelves | 25050 |
| Dressing Trolley - 450 x 450 x 850mm - with Fixed UT Shelves | 25100 |
| Dressing Trolley - 750 x 450 x 850mm - with Fixed UT Shelves | 25120 |
| Dressing Trolley - 900 x 450 x 850mm - with Fixed UT Shelves | 25130 |



SPECIFICATIONS

| | | | |
|---------|--|-----------------|---|
| Frames | Stainless steel tube bright polished tube | Shelves | Stainless steel polished sheet 240 silicon grain |
| Castors | 65mm twin-wheel, polyurethane-tyred | Weight capacity | 100kg |

Mayo Tables

In addition to the traditional instrument trolleys, we also offer mayo tables. Supplied with two base options that are both weighted for exceptional stability, these mayo tables are manufactured to a traditional design and recognised for their ease of use and functionality.

Features:

- Options of 4 castors or 2 castors + 2 flattened forefeet
- High-quality stainless steel finish
- Exceptional stability
- Manufactured to a traditional design

| Description | Code |
|--|-------|
| Mayo Table - with 4 Castors | 25500 |
| Mayo Table - with 2 Castors and 2 Flattened Forefeet | 25510 |

INSTRUMENT TROLLEYS



SPECIFICATIONS

| | | | |
|-----------------------|--|------------------|-------------------------|
| Frame | Stainless steel electropolished | Height range | 870 mm - 1220mm |
| Base width | 495mm | Base length | 670mm |
| Height to top of base | 225mm | Tray size | 510 x 380 x 25mm |
| Castors | 65mm twin-wheeled, polyurethane-tyred | Weight of tables | 12kg |



STOOLS

Surgeon's Stools

Our gas-lift stools are made in a modular design, which allows customers to choose the exact specifications to meet their needs. Our range allows you to choose multiple different styles, including castors or stump feet, and stools with armrests and backrests.

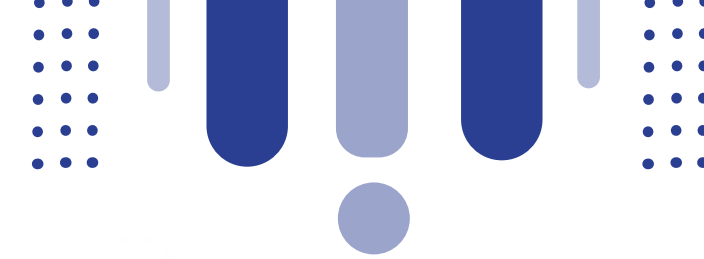
Features:

- A range of options to suit your needs
- 380mm pressure care seat
- High-quality stainless steel finish
- Weight capacity: 150kg

| Description | Code |
|--|---------|
| Surgeon's Stool - with Castors - incl. seat cushion | 25300 |
| Surgeon's Stool - with Stump Feet - incl. seat cushion | 25310 |
| Surgeon's Stool - Backrest - incl. Pad | 25320 |
| Surgeon's Stool - Armrests - incl. Pads | 25330 |
| Surgeon's Stool - Cushion - Ø380mm | 25340 |
| Surgeon's Stool - Backrest Pad | 25350 |
| Surgeon's Stool - Armrest Pad | ✂ 25360 |



| SPECIFICATIONS | | | |
|----------------|---|-----------------|--|
| Base | 5-Star aluminium Teflon® - 585mm diameter | Top | Polished stainless steel |
| Height range | 480mm - 680mm | Castors | 65mm twin-wheeled, polyurethane-tyred |
| Seat | 380mm pressure care pad | Backrest | Adjustable, polished stainless steel incl. pad |
| Armrests | Polished stainless steel with pad | Weight capacity | 150kg |



Bowl Stands

Manoeuvrable and functional, these stainless steel bowl stands are manufactured with a Teflon® coated 5-star base to ensure maximum stability. There are also spiral buffers on the ring to eliminate rattle.

| Description | Code |
|---|-------|
| Bowl Stand - Single Bowl | 25600 |
| Bowl Stand - Double Bowl - Side by Side Mounted | 25610 |

Kick-about Bowl

This kick-about bowl model is manufactured from the highest grade materials - ensuring it is both functional and manoeuvrable. This bowl also contains spiral buffers on the ring to eliminate rattle.

| Description | Code |
|-----------------|-------|
| Kick-about Bowl | 25700 |



BOWL STANDS



Stainless Steel Bowl - 6 Litre Capacity

A replacement 6 litre capacity bowl for the kick-about bowl model and bowl stands.

| Description | Code |
|---|---------|
| Bowl - Stainless Steel - Ø350mm - H140mm - 6 Litre Capacity | ✂ 25705 |



IV POLES AND GENERAL FURNITURE



**Transfusion Stand -
5-Star Base -
4 Hook**

This stand includes solid stainless steel poles, an innovative quick release safety locking mechanism by Provita, and drainage at the base of the column to prevent fluid build-up. The base is a 5-Star aluminium Teflon® coated finish, which is ultra clean and wear resistant.

| Description | Code |
|--|-------|
| Transfusion Stand - 5-Star Base - 4 Hook | 25420 |



Surgeon's Platform

Designed to allow full surgical access, our platform achieves maximum stability by using only 4.5mm non-slip aluminium treadplate.

| Description | Code |
|--------------------|-------|
| Surgeon's Platform | 25800 |



Soiled Linen Receiver

This stable but highly manoeuvrable item has a mild steel powder coated frame and twin-wheeled, polyurethane-tyred, non-corrosive castors. This soiled linen receiver also includes a white terylene bag with draw cord.

| Description | Code |
|---|-------|
| Soiled Linen Receiver - Single Receiver including bag | 25900 |
| Soiled Linen Receiver - Terylene Bag Only | 25915 |

Discover the factory fitted build options when ordering

We have a range of factory fitted build options for our theatre furniture that can be specified at the time of ordering. If your equipment migrates to other departments and you need to clearly identify where it belongs, our coloured castors can help with that. In addition to this, we also offer two types of braking with our surgeon's stools - either a standard braking option or only brake when loaded.

Features:

- Choices to suit your needs
- Braking allows for additional support
- Coloured castors to allow for easy identification
- **PLEASE NOTE: MUST SPECIFY WHEN ORDERING**

| Description | Code |
|---|-------|
| Castors - RED - Factory Fitted* | 25220 |
| Castors - BLUE - Factory Fitted* | 25222 |
| Castors - GREEN - Factory Fitted* | 25224 |
| Castors - YELLOW - Factory Fitted* | 25226 |
| Castors - PURPLE - Factory Fitted* | 25227 |
| Castors - BLACK - Factory Fitted* | 25228 |
| Castors - WHITE - Factory Fitted* | 25229 |
| Surgeon's Stool - Castors - Braking - Factory Fitted* | 25370 |
| Surgeon's Stool - Castors - Brake when loaded - Factory Fitted* | 25375 |

*Factory Fitted - must specify when ordering

FACTORY FITTED BUILD OPTIONS



Factory-fitted options for clear identification and usability



SOCIAL VALUE



MADE IN THE UK



CARBON NEUTRAL

GENERAL ACCESSORIES



General - Spares

Our replacement touch fasteners - ideal for general surgery and other surgical procedures.

| Description | Code |
|--|--------|
| Touch Fastener Pack | 691000 |
| VELCRO® Brand Touch Fastener - Ø45mm Loop Coin | 691005 |



QA4 Powered - Spares

Our replacement handsets for the QA4™ Powered Mobile Surgery System.

| Description | Code |
|--|---------|
| QA4 Powered - v2.2 Design - Replacement Handset (551 to 3450) | 69923/2 |
| QA4 Powered - v3.0 Design - Replacement Handset (3451 Onwards) | 69923/3 |



Stainless Steel Theatre Furniture - Spares

Replacement castor parts for our stainless steel theatre furniture range.

| Description | Code |
|---|--------|
| Castor - Ø65mm - 5 Star Base - Grey Wheel Cap | 692000 |
| Castor - Ø65mm - Tubular Leg | 692015 |

GENERAL ACCESSORIES

Operating Theatre Accessories - Spares

We offer a range of service spares for our operating theatre accessory range - from replacement pads to drop handles.

| Description | Code |
|---|--------|
| Lateral / Pelvic Support - Drop Handle - L170mm (75 Handle) | 691100 |
| Lateral / Pelvic Support - Washer Brass - OD Ø19 x ID Ø9.6 | 691105 |
| Lateral Support - Stem (Right Angled) - L245 x W32 x D6.2mm - with M10 x 20mm Male Thread | 691110 |
| Pelvic Support - Stem - L180 (135 Stem) x Ø16mm - with M10 | 691115 |
| Lateral Brace - Replacement Pad - Circular Support | 691120 |
| Lateral Brace - Pad - Rectangular Support - Centred | 691125 |
| Lateral Brace / Arthroscopic Stress Post - Pad - Off-set | 691130 |
| Boot Pad - for Standard & Elite Stirrups | 691200 |
| Boot Pad - for Heavy Duty Stirrups | 691205 |
| Boot Pad - for PAL Pro® Stirrups | 691210 |
| Boot Pad - for Finned & Finned Elite Stirrups | 691215 |



Subject to annual servicing

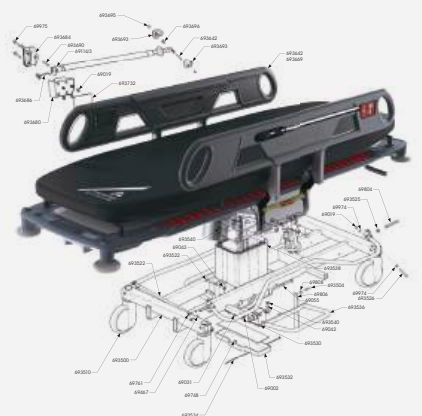


We offer the unique and popular **'Lifetime Warranty Scheme'**

Take out a **AnetiCare** service package for regular and predictable maintenance costs that includes a **10 YEAR WARRANTY**.

Covers engineer's time and most parts. Contact us to learn more about what a **AnetiCare** service package can offer you.

Available via your Anetic Aid partner – find them at aneticaid.com/distributors.



SEE ALSO



QA4™
Mobile Surgery System

The complete multi-purpose solution for transport, treatment and recovery.

AneticAid 

QA4 Mobile Surgery System

The complete multi-purpose solution for transport, treatment and recovery.

PLUS
our other product areas



Scan this code to see our **QA4's** journey through day surgery!



Innovative Medical Technology Practically Applied

QA3™
Ophthalmic Stretcher



Outstanding surgical access – exceptional patient comfort

AneticAid 



QA3™
Patient Stretcher



The complete solution for patient transport

AneticAid 

QA3™
Emergency Stretcher



Safe, robust and versatile patient stretcher – for the modern day emergency department

AneticAid 

AT4™
Tourniquet Equipment



Ideal for single or bilateral orthopaedic surgery and pain management

AneticAid 

QA4™
Surgical Versatility Guide



The complete surgical versatility guide for your QA4™ Mobile Surgery System

AneticAid 

For more information on any of our products or service contracts, call:
sales@aneticaid.com **+44 (0)1943 878647** aneticaid.com



Innovative **Medical** Technology - **Practically Applied**     

Anetic Aid Ltd, Sapper Jordan Rossi Park, Otley Road, Baildon BD17 7AX, UK